

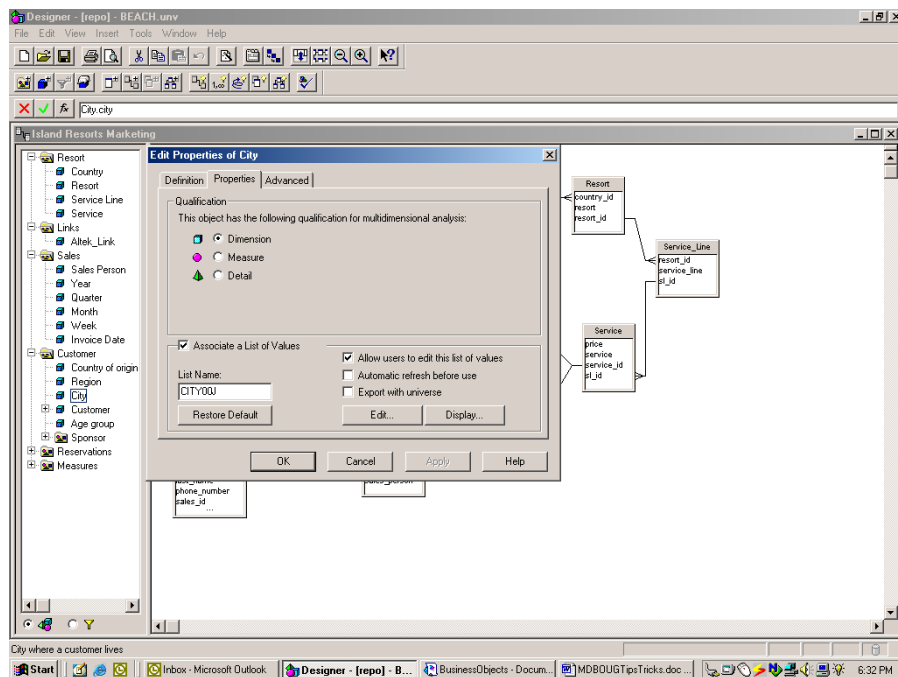
Creating Dynamic List-of-Values (LOV)

Summary:

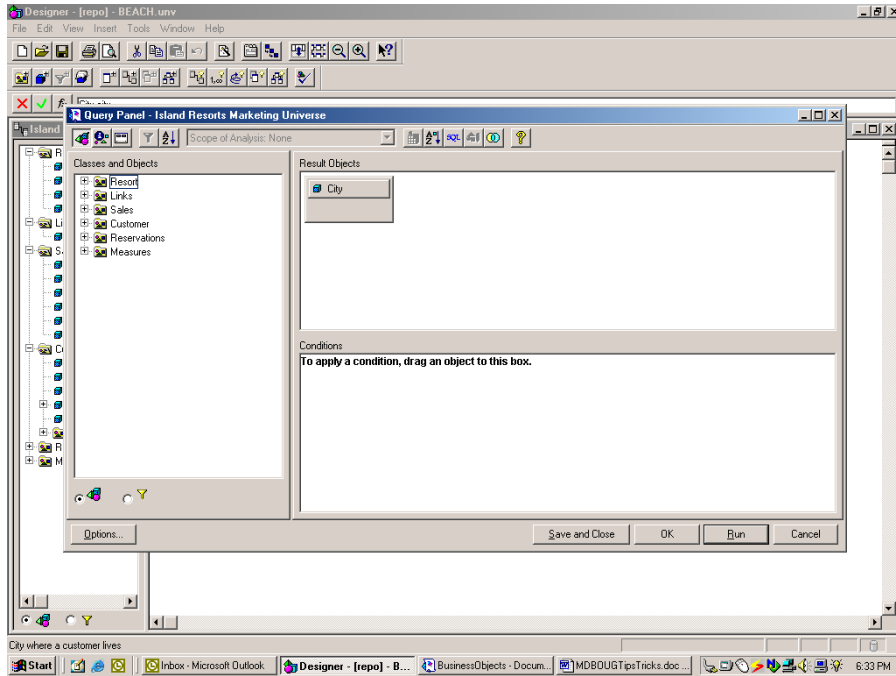
This tip will show you how to generate dynamic list-of-values that are based on other objects. For example, we'll show how to limit the list of values or "city" according to the "region" specified.

Instructions:

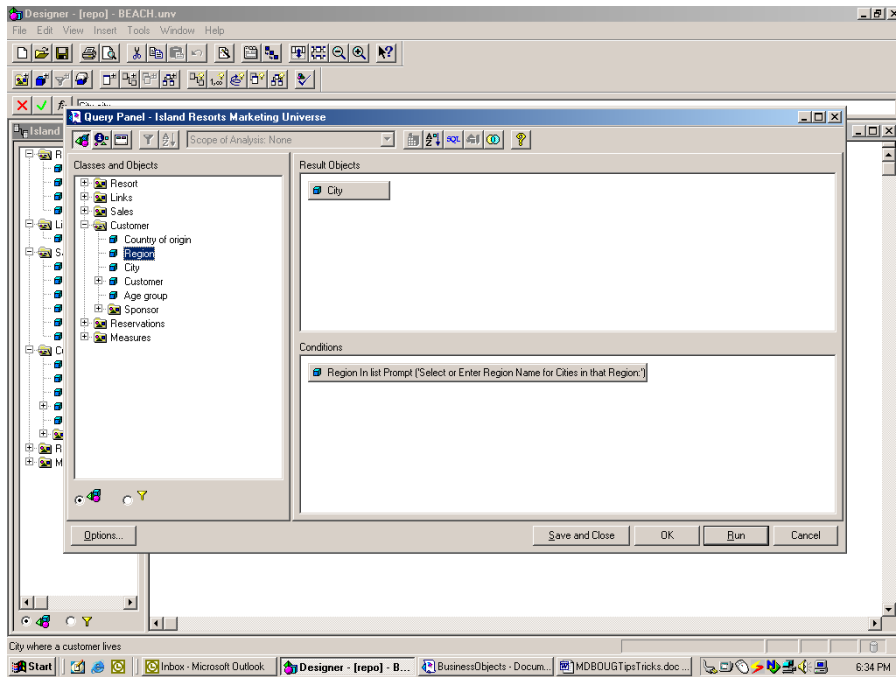
1. For our example, we are going to customize the LOV's for the CITY in the ISLAND RESORTS MARKETING universe.
2. Launch DESIGNER and open the universe.
3. Click on the CITY object and open the PROPERTIES tab in the EDIT PROPERTIES window.



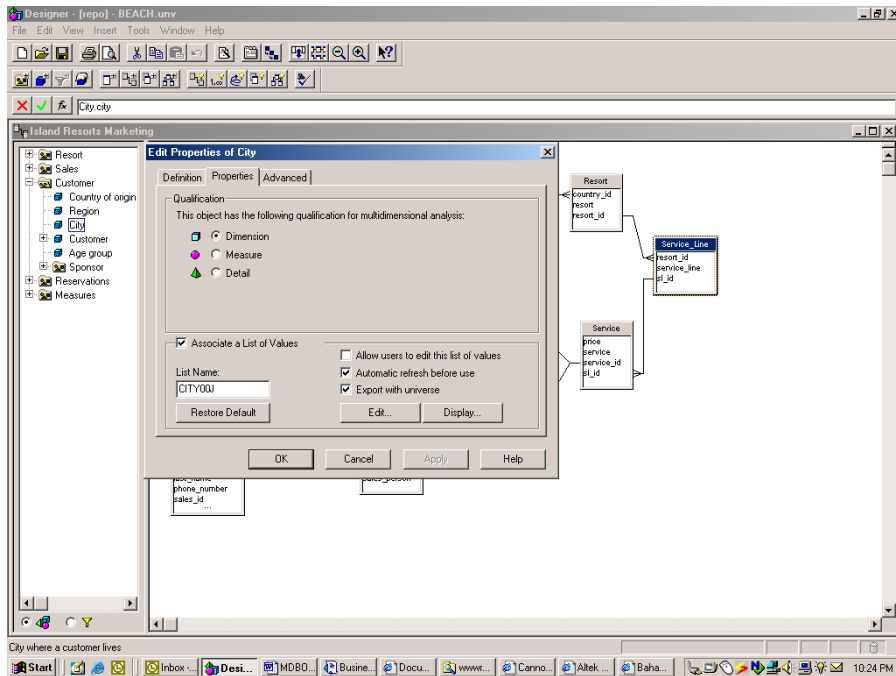
4. Then click on the EDIT button and you will see a standard QUERY PANEL.



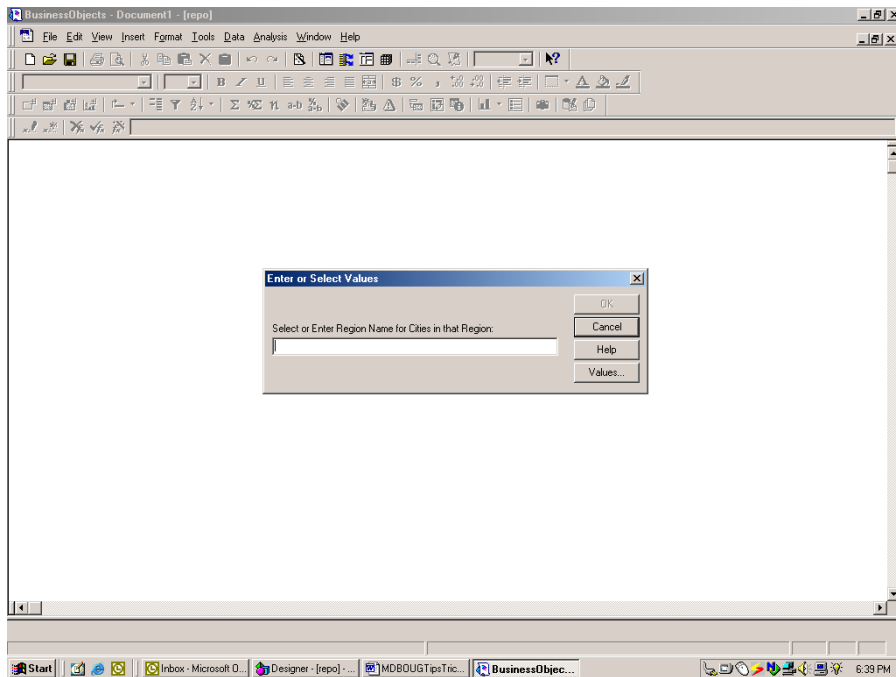
5. Create a condition on REGION and have it prompt for one or more regions (use INLIST).



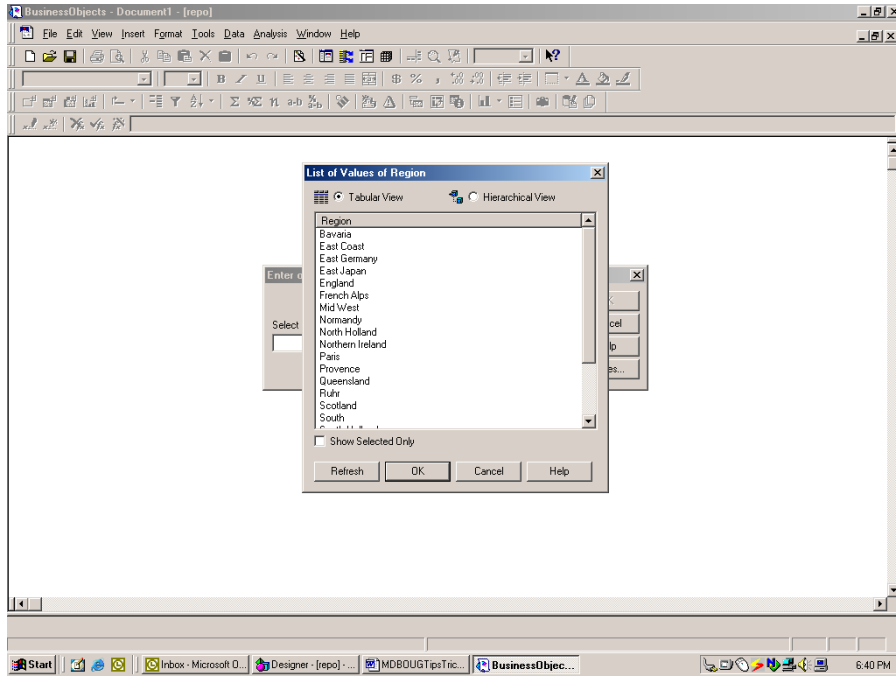
6. Click on the 'SAVE AND CLOSE' button.



7. To make sure the dynamic LOV's works correctly, uncheck the 'ALLOW USERS TO EDIT THIS LIST OF VALUES', and check the 'AUTOMATIC REFRESH BEFORE USE' and the 'EXPORT WITH UNIVERSE' options.
8. Click OK and then save and export the universe.
9. Create a new report and include the city in the conditions box with a prompt (use INLIST). When you run the report click on the VALUES button.



10. Click the VALUES button again on the new prompt window.



11. Select the desired regions and then click OK twice.

12. You will then get a list of values window that contains only those cities in the selected regions.

