



**ALL INFORMATION,
ALL PEOPLE, ONE PLATFORM**

WHAT'S NEW IN
SAP® BusinessObjects™ XI 3.1

NEW FUNCTIONALITIES

BROADER DATA ACCESS, IMPROVED USABILITY, GREATER FLEXIBILITY

SAP® BusinessObjects™ XI 3.1 solutions are the next major release of business intelligence (BI) software from SAP. SAP BusinessObjects XI provides a full spectrum of BI functionality. Functions range from reporting, query and analysis, and dashboards and visualization, to intuitive discovery and advanced predictive analytics capabilities, as well as data quality and extract, transform, and load functionality.

SAP BusinessObjects XI 3.1 delivers:

- A superior BI platform for heterogeneous environments, so your organization can provide a trusted, complete view of all information assets
- Improved usability for analysts and business users, allowing greater self-sufficiency and faster, better-informed decisions
- Real-world BI deployment flexibility, allowing IT to deliver and maintain BI applications to more users across your organization

SAP BusinessObjects XI 3.1 helps you unlock and access all corporate information, both structured and unstructured, and provides a unified view for more confident decision making. It includes a complete suite of BI tools required for strategic, corporate BI initiatives and for more aligned teams and business networks, and it brings all this functionality integrated on one flexible, unified BI platform.

This document provides a high-level overview of the new functionalities offered in SAP BusinessObjects XI 3.1 and covers the following product areas:

- Integration with IT environments enabled by Microsoft software
- Integration with Oracle enterprise applications
- Data access and supported platforms
- Native 64-bit architecture
- Information discovery and delivery solutions
- Content life-cycle management
- Platform administration

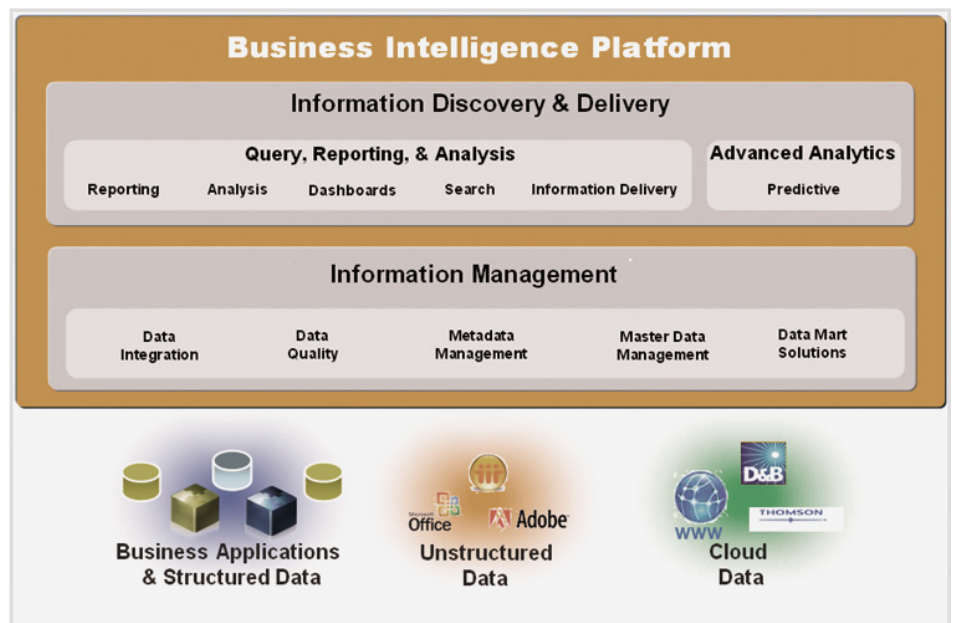


Figure 1: SAP® BusinessObjects™ XI 3.1 Functionalities

INDUSTRY-LEADING BI FOR ALL IT ENVIRONMENTS

SUPPORT FOR MICROSOFT AND ORACLE SOFTWARE

Integration with IT Environments Enabled by Microsoft Software

Microsoft recently refreshed many components of its technology platform: Microsoft Windows Server 2008, Microsoft SQL Server 2008, Internet Information Services 7.0 (IIS 7.0), and Microsoft Visual Studio 2008. SAP BusinessObjects XI 3.1 supports all the latest releases of that technology platform and offers native Microsoft .NET Framework support for SAP BusinessObjects Web Intelligence® software, SAP BusinessObjects Desktop Intelligence™ software, and the business intelligence portal. For the business intelligence portal, the SAP BusinessObjects XI 3.1 release maintains existing parity between Microsoft .NET Framework and Java versions by supporting the Microsoft .NET Framework 3.0 and 3.5.

SAP BusinessObjects XI 3.1 supports Microsoft SharePoint Services and Microsoft Office SharePoint Server 2007 and benefits from a number of architectural changes. SAP BusinessObjects XI 3.1 is also the answer for organizations wishing to extend insight from BI to any Web or Microsoft .NET application. IT departments and developers can reuse the functionalities of the BI platform, such as scheduling and security, or embed the existing content in applications by using the updated Microsoft .NET BI platform software development kit.



Integration with Oracle Enterprise Applications

SAP BusinessObjects XI 3.1 introduces direct connectivity to Oracle E-Business Suite – enabling organizations to consolidate and transform vast amounts of Oracle application data into reports, analyses, visualizations, and dashboards. Single sign-on and direct access to relevant insight also contribute to increased end-user productivity. SAP BusinessObjects software delivers connectivity to other Oracle applications, so users can make the most of information stored in PeopleSoft Enterprise, JD Edwards EnterpriseOne, and Siebel applications.

Data Access and Supported Platforms

SAP BusinessObjects XI 3.1 provides even more flexibility and the power to connect to all data – regardless of

format or location. Broader data access ultimately means that users can make decisions more confidently, because they know that SAP BusinessObjects XI 3.1 delivers a consistent user experience – no matter what the data sources are (see Figure 2).

New Data Sources
HP NeoView 2.3
Microsoft SQL Server 2008
Microsoft Analysis Services 2008
Netezza 4.0
Oracle 10g RAC
Oracle 11g
Oracle 11g RAC
PostgreSQL
Progress OpenEdge
Teradata 12

Figure 2: Some New Data Sources You Can Access with SAP® BusinessObjects™ XI 3.1

SAP BusinessObjects XI 3.1 gives you flexibility and power to access all information – regardless of format, shape, size, or location – enabling everyone in your organization to make more confident decisions based on trusted, reliable information. It provides broad and flexible support for standard industry applications and solutions from SAP, Oracle, PeopleSoft, Microsoft, Siebel, JD Edwards, salesforce.com, and hundreds of other environments.

SAP BusinessObjects XI 3.1 also meets the needs of a truly heterogeneous system and business environment by offering organizations the ability to mix operating systems and servers and to meet ever-changing business needs. SAP continues to demonstrate its commitment toward heterogeneity

and technology agnosticism by expanding the number of operating systems supported, such as Red Hat Enterprise Linux 5, Microsoft Windows Server 2008, and Microsoft Windows Vista Service Pack 1.

Native 64-Bit Architecture

SAP BusinessObjects XI 3.1 represents the first time SAP BusinessObjects Enterprise software is offered as a 64-bit application for high-performance BI on HP-UX Itanium systems. All platform services associated with SAP BusinessObjects solutions – Crystal Reports® software, SAP BusinessObjects Web Intelligence software, SAP BusinessObjects Voyager software, and others – benefit from a native 64-bit implementation.

Information Discovery and Delivery Solutions

Information discovery solutions provide analysts and business users with query, reporting, analysis, dashboard, and user-friendly information search and navigation functionality, giving them quick access to the information they need to make enlightened decisions.

SAP BusinessObjects Voyager
SAP BusinessObjects Voyager software continues to build on its first two releases and offers a number of improvements that enable analysts and business users alike to discover data using new data visualizations and exception highlighting. Visualization options include box plots, scatter plots, radar charts, and bubble plots, as depicted in Figure 3.

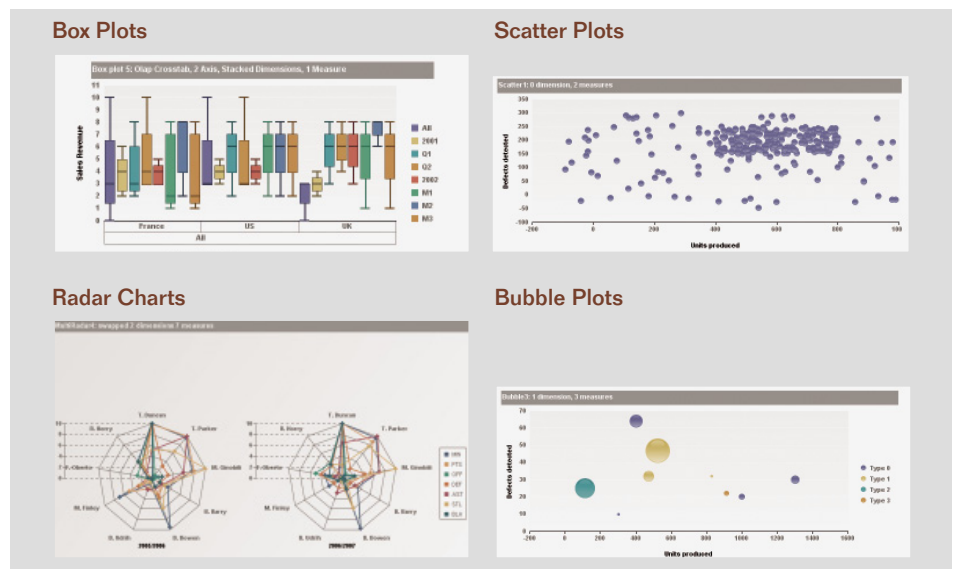


Figure 3: New Visualization Options for SAP® BusinessObjects™ XI 3.1

With SAP BusinessObjects XI 3.1, you can provide the right role-specific BI functionalities to everyone in your organization – ranging from reporting, query and analysis, and dashboards and visualization, to intuitive discovery and advanced predictive analytics. All users, from the high-end analyst to the casual information consumer, have access to the information they need while requiring minimal dependence on IT resources and developers.

- Expanded Microsoft Excel export functionalities – SAP BusinessObjects Web Intelligence documents can be saved as comma-separated values (CSV) files and multiple Microsoft Excel sheets if they have more than 65,536 rows
- Option to cancel refresh on open
- Automatic loading of list of values

In this release, SAP BusinessObjects Web Intelligence also offers additional safeguards designed to manage memory consumption by applying a number of measures when user demands reach certain thresholds.

Other noteworthy improvements to SAP BusinessObjects Voyager include:

- Microsoft Analysis Services 2008 as a supported data source
- Drill-through to SAP BusinessObjects Web Intelligence or Crystal Reports, enabling context (row and column headings) to be passed to an existing report or analysis
- Personalized favorite members, so users can define a group of favorite members from any dimension and then use that metadata selection to quickly get a personalized view of the information

SAP BusinessObjects Web Intelligence

In SAP BusinessObjects XI 3.1, SAP BusinessObjects Web Intelligence software delivers several interface improvements that provide a more powerful analysis experience for business users and analysts. Enhancements include:

- Flexible comparisons between data sets – onward, backward, in blocks, sections, breaks, and over any number of dimensions
- Convenient and simple data filtering with new report filter bar

SIMPLIFIED DEPLOYMENT

BROADER RANGE OF CONFIGURATION OPTIONS

Content Life-Cycle Management

SAP BusinessObjects XI 3.1 offers a new life-cycle management application to manage the promotions of BI content between environments (see Figure 4). This application simplifies BI content management throughout its typical life cycle (development, testing, and production) for all organizations.

Based on extended customer feedback, the application reduces maintenance and maximizes platform utilization by providing:

- Complete granular control over any content or objects
- Dependency check and analysis
- Auditing and scheduling
- Delegated administration
- Rollback

Platform Administration

SAP BusinessObjects XI 3.1 includes many improvements that simplify platform deployment and administration while retaining the granularity and flexibility required by complex or global deployments.

Internet Protocol Version 6

SAP BusinessObjects clients and servers will support 128-bit Internet protocol version 6 (IPv6) address syntax. They will be able to work in IPv4-only environments, IPv6-only environments, or a combination of both.

Microsoft Active Directory

SAP BusinessObjects Enterprise software enables administrators to support Microsoft Active Directory

authentication across multiple domains within a company's network. Using the central management console, BI system administrators can set up Microsoft Active Directory authentication with either the Kerberos or NT LAN Manager (NTLM) protocols.

Repository Diagnostic Tool

The repository diagnostic tool scans for and repairs inconsistencies that may occur in the metadata in your repository, in addition to inconsistencies that may occur between the file repository servers and the central management server database.

Translation Manager

In SAP BusinessObjects XI 3.1, the translation manager user interface is more intuitive to use while maintaining all the existing functionality. User interface enhancements include new menus and toolbars, updated wizards for importing and exporting XML Localization Interchange File Format, and streamlined views for improved translation workflow.

Languages

SAP BusinessObjects XI 3.1 supports a total of 17 languages – including three new ones: Norwegian, Danish, and Thai.

Name	Status	Last Modified	Last Run	Source System	Destination System	Created by
Expenses Liability	Failed	07/05/07	6/21/2007 12:22 PM	HR DEV	HR TEST	Len
Asset Management	In Progress	07/05/07	5/21/2007 1:22 PM	Sales DEV	Sales TEST	Fred
Credit Risk Analysis	In Progress	07/05/07	5/21/2007 3:00 PM	Finance DEV	Finance TEST	Fred
HR Headcount Reporting	In Progress	07/05/07	3/21/2007 1:22 PM	Finance DEV	Finance TEST	Fabien
Quarterly Payment History 20	Promoted with errors	07/05/07	2/21/2007 1:23 PM	Finance DEV	Finance TEST	Fabien
Queues Wait Time Analysis	In Progress	07/05/07	NA	Sales TEST	Sales PROD	Fred
Sales Pipeline Analysis	Promoted	07/05/07	1/21/2007 1:00 PM	HR DEV	HR TEST	Len

Figure 4: Visual of Life-Cycle Management Application

Summary

By providing one of the best platforms for heterogeneous environments, a refined user experience for analysts and business users, and real-world BI deployment flexibility, SAP BusinessObjects XI 3.1 delivers insight through a single, trusted BI platform. And it redefines the way information empowers users. SAP BusinessObjects XI 3.1 delivers on the promise of a true intelligence platform – one that gives customers the best of execution and the best of strategy. Most important, it provides the means to align and connect strategies in a closed-loop system.

To Learn More

To find out more about SAP BusinessObjects XI 3.1 and other SAP BusinessObjects solutions, call your SAP representative or visit www.sap.com/sapbusinessobjects.



SAP BusinessObjects XI 3.1 offers an easy-to-use data integration environment with integrated data quality, data lineage, data auditing, and data access and movement. It helps ensure that your business data is correct, consistent, and complete and allows for better staff utilization, more effective project management, and lower cost of ownership.

All rights reserved. SAP, R/3, xApps, xApp, SAP NetWeaver, Duet, PartnerEdge, ByDesign, SAP Business ByDesign, and other SAP products and services mentioned herein as well as their respective logos are trademarks or registered trademarks of SAP AG in Germany and in several other countries all over the world.

Business Objects and the Business Objects logo, BusinessObjects, Crystal Reports, Crystal Decisions, Web Intelligence, Xcelsius, and other Business Objects products and services mentioned herein as well as their respective logos are trademarks or registered trademarks of Business Objects S.A. in the United States and in several other countries all over the world. Business Objects is an SAP company.

All other product and service names mentioned are the trademarks of their respective companies. Data contained in this document serves informational purposes only. National product specifications may vary.

These materials are subject to change without notice. These materials are provided by SAP AG and its affiliated companies ("SAP Group") for informational purposes only, without representation or warranty of any kind, and SAP Group shall not be liable for errors or omissions with respect to the materials. The only warranties for SAP Group products and services are those that are set forth in the express warranty statements accompanying such products and services, if any. Nothing herein should be construed as constituting an additional warranty.



Corporate Office
297 Suedberg Road Suite 300
Pine Grove, PA 17963
(877) 844-7476

Baltimore/Washington Metro
(443) 283-8442

Philadelphia, PA
(267) 386-8240

Harrisburg, PA
(717) 370-6034

info@alteksolutions.com

www.alteksolutions.com