

SAP Product Brief

SAP BusinessObjects Business
Intelligence Solutions

SAP Crystal Reports

PROFESSIONAL-GRADE REPORTING FOR ALL EMPLOYEES

WHAT'S NEW IN SAP® CRYSTAL REPORTS® 2008

Recent enhancements in SAP® Crystal Reports® 2008 software let you create compelling reports with stunning visualizations, benefit from comprehensive report deployment options, and enable better-informed decisions for all employees, all while saving development time with improved, integrated, report-design tools.

SAP® Crystal Reports® 2008 software is a powerful, dynamic, and actionable reporting solution that helps you design, explore, visualize, and deliver reports via the Web or by building them into custom applications. Users can consume reports with stunning visualizations, conduct on-report business modeling, and execute decisions instantly from the report itself – reducing dependency on IT and developer resources.

With SAP Crystal Reports, you can:

- Empower users to explore reports interactively
- Create compelling reports with stunning visualizations
- Develop powerful data mashups
- Save valuable report-design time
- Enjoy comprehensive report deployment options and an improved report designer

Interact: Empower Users to Explore Reports Interactively

The following features improve a user's experience.

Interactive report viewing – On-report sorting, filtering, and reformatting allow users to explore information interactively without querying the database again. Optional parameters support complex, user-driven filtering scenarios. Users can answer more questions with fewer, more flexible reports – significantly reducing dependency on developer and IT support. Filtering panels and sorting buttons can be built into the report as needed.

Parameter panel – The report designer and viewers have a parameter panel so that parameter values can be set without refreshing data. Report designers build panels into their reports prior to publishing them. Parameters are displayed on the panel so that report consumers can find them readily, make changes, and have the new values applied directly to the saved data.

SAP Crystal Dashboard Design integration – Import Shockwave Flash (SWF) files generated from SAP Crystal Dashboard Design software, personal edition (formerly Xcelsius® Engage), into your reports and benefit from improved design-time integration and visualizations. Enhance reports with what-if models that enable users to make important decisions dynamically without leaving the report file.

Adobe Flex integration – Integrate reports with operational workflows by building Adobe Flex applications into reports. Using Adobe Flex Builder or Adobe Flash Builder, you can create a user interface (UI) to access report data and to integrate with external Web services. Data in a report can be passed to Adobe Flex, making it easier to create a flexible UI even when you don't have access to your data via Web services. Adobe Flex can do tasks such as database write-back and invoking operational workflows directly within SAP Crystal Reports.

Visualize: Create Reports with Stunning Visualizations

The following features help designers create dynamic, powerful reports.

Adobe Flash integration – A wide variety of data presentation options are now available through Adobe Flash. SWF files can be integrated into a report (either built in or linked via a Web site), and report data can be shared with SWF via FlashVars for compelling, interactive, and information-rich reports.

Powerful cross-tabs – Custom row and column calculations can now be inserted into a cross-tab, which is useful for reports that benefit from a table structure. The cross-tab table structure makes reports much faster to build and maintain.

Flexible pagination – Report designers can customize page size and page breaks. A single report can combine portrait and landscape page formats, and the white space at the end of groups can be removed by compressing page footers.

Design: Develop Powerful Data Mashups

The following features enable data to be pulled from heterogeneous sources.

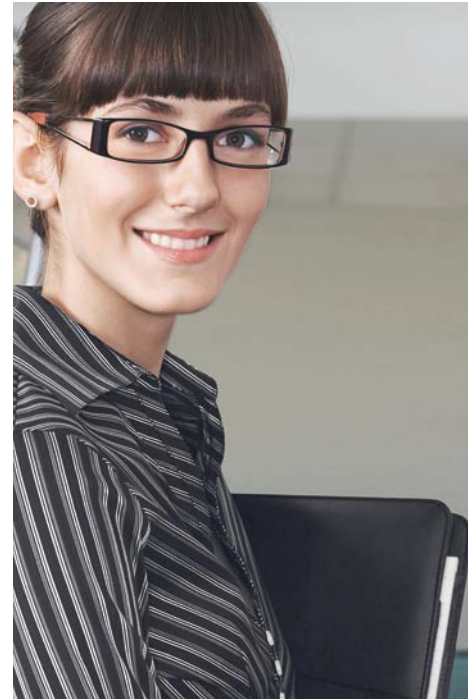
Integration with SAP Crystal Dashboard Design, Adobe Flex, and Adobe Flash – Developers can produce powerful mashups (hybrid Web applications) by pulling data from various sources. They can embed SWF files without coding and add powerful visualizations to reports.

Web services data driver – Integrating with various Web services can be difficult and complex due to a variety of implementation types. This new data driver offers additional Web access to Web services by providing support for remote procedure call (RPC) encoding of SOAP messages, SSL-secured Web servers, and compatibility with Web Services Security (WS-Security) protocol. It adapts to custom logon requirements such as e-mail address or username and password. Developers combine the flexibility of XML and Web services with report formatting and visualization to deliver reports that link data to interactive data mashups, such as integration with third-party mapping systems.

Design: Save Valuable Report-Design Time

The following features let designers work faster and smarter.

Built-in bar-code support – Report designers can generate bar codes with only a few mouse clicks by using the new “turn to bar code” function in the context menu. They can convert fields



to Code 39 bar codes without any coding or extra steps. Additional bar-code fonts are available from third-party vendors.

Enhanced designer features – Designers can be more productive with features like global formula search, duplicate formula, duplicate running total, autocomplete field names, and the “find in field explorer” feature.

Hyperlinking wizard – Designers save time by automatically creating the formulas required to hyperlink to a document stored in SAP Crystal Reports Server, SAP BusinessObjects™ Enterprise, or SAP BusinessObjects Edge Business Intelligence (BI) software.

Single edition – SAP Crystal Reports 2008 comes in a single edition that provides quick access to the features you need to meet any application and user requirement. Report samples and developer documentation are available as free, optional downloads.

Multilingual reporting – During product installation, you can choose a working language by selecting the language packs you want and then switching the report designer UI to use any of the packs that are installed. Report-content locale can be set explicitly for each report file. This setting controls sorting, grouping, and formatting that matches the local language customs and conventions.

Deploy: Comprehensive Deployment Options

The following features provide multiple ways to deploy reports.

Data-driven publishing – You can publish personalized reports such as invoices, statements, and marketing materials to thousands of recipients in a single publishing session. Also known as report bursting, data-driven publishing allows IT personnel to create multiple reports based on different data sources, personalized for each recipient, combined into a single file (such as Adobe PDF), and distributed to a dynamic list of recipients – all with a single action. Content can be archived, printed, or e-mailed. This makes scheduling faster and easier and gives you the ability to conduct cost-effective, one-on-one marketing campaigns and personalized high-volume reporting. Data-driven publishing is available in SAP Crystal Reports Server, SAP BusinessObjects Enterprise, and SAP BusinessObjects Edge BI.

Integrated Salesforce.com driver – The Salesforce.com driver included with SAP Crystal Reports provides quick access to complete customer data – turning it into actionable business information.

Improved XML exporting – You can render reports in almost any format and enjoy faster and easier integration with industry-specific business processes – without any custom coding. Extensible stylesheet language transformations (XSLT) are embedded in the report file and are triggered by users from within the viewer when exported to XML. This provides a powerful, flexible hook for

transforming SAP Crystal Reports data and integrating it into other applications.

.NET report modification software development kit (SDK) – The report application server (RAS) SDK is now available for users of the SAP Crystal Reports .NET application programming interface (API) without the use of an RAS. Report modification, such as changing database providers or adding, removing, or creating report objects, can be achieved with the RAS SDK through the .NET SDK.

Java runtime engine – SAP Crystal Reports, version for Eclipse, is a separate download that includes a Java runtime engine optimized for deploying SAP Crystal Reports .rpt files in your Java application. It supports both thick-client and Web applications and includes an integrated development environment (IDE) tool for the Eclipse IDE, a Java runtime engine, and a simple report-design tool integrated into the Eclipse IDE.

Web applications for external use – External distribution of Web applications embedding the runtime engines is now available for one fixed price with the SAP Crystal Reports [runtime server license](#).

What's Changed

We've made the following changes to SAP Crystal Reports:

- To reduce download time, **report samples and the sample database** are accessed through separate downloads on the start page of SAP Crystal Reports, as are **.NET developer documentation, merge modules, and MSI files**.¹

SAP Crystal Reports software enables users to consume reports with stunning visualizations, conduct on-report business modeling, and execute decisions instantly from the report itself – reducing dependency on IT and developer resources.

- The **report designer component (RDC)** is not supported in SAP Crystal Reports. Developers wishing to use SAP Crystal Reports in a component object model (COM) application should use the precursor of SAP Crystal Reports 2008 (Crystal Reports XI, release 2). **Advanced dynamic HTML (DHTML) viewers** have been removed from SAP Crystal Reports because improvements to DHTML viewers make additional viewers unnecessary.
- **Java reporting component (JRC) and Java SDK documentation** are available through the free download for **SAP Crystal Reports, version for Eclipse**.

Find Out More

To learn more about SAP Crystal Reports, call your SAP representative or visit us online at www.sap.com/sapbusinessobjects.

1. Installation packages for Windows Installer (previously known as Microsoft Installer) are informally known as MSI files.

QUICK FACTS



Corporate Office
297 Suedberg Road Suite 300
Pine Grove, PA 17963
(877) 844-7476

Baltimore/Washington Metro
(443) 283-8442

Philadelphia, PA
(267) 386-8240

Harrisburg, PA
(717) 370-6034

info@alteksolutions.com

www.alteksolutions.com

Summary

SAP® Crystal Reports® software is an intuitive reporting solution that helps you create flexible, feature-rich, dependable reports that are tightly integrated into both thick-client and thin-client applications.

Business Challenges

- Reduce dependency on IT staff for report design, development, and deployment
- Give users the ability to readily visualize the potential outcome of business decisions
- Expand access to data over the Web
- Add business-critical information to reports without coding

Key Features

- **Report design** – Create highly formatted, interactive, and professional-looking reports using a complete set of layout tools and design controls
- **Application development** – Leverage cross-platform support for both Java and .NET HTML, allowing developers to focus on application business logic rather than tedious, time-intensive coding
- **Report delivery** – Export reports to popular formats, such as Adobe PDF, Microsoft Office, and rich text format

Business Benefits

- **Save report design time** with a stand-alone report designer or a design tool integrated within Microsoft Visual Studio 2008 without leaving the development environment
- **Provide a flexible development environment** with separation of application development and report-design tasks so that developers can focus on application development while report authors can focus on report design
- **Increase report use** by creating compelling reports with stunning visualizations
- **Enable faster, better-informed decisions** at all levels of the organization with interactive report exploration and controlled sharing because reports can be previewed in HTML and published to the Web

50 093 219 (10/07)

©2010 SAP AG. All rights reserved.

SAP, R/3, SAP NetWeaver, Duet, PartnerEdge, ByDesign, SAP BusinessObjects Explorer, and other SAP products and services mentioned herein as well as their respective logos are trademarks or registered trademarks of SAP AG in Germany and other countries.

Business Objects and the Business Objects logo, BusinessObjects, Crystal Reports, Crystal Decisions, Web Intelligence, Xcelsius, and other Business Objects products and services mentioned herein as well as their respective logos are trademarks or registered trademarks of Business Objects Software Ltd. in the United States and in other countries.

All other product and service names mentioned are the trademarks of their respective companies. Data contained in this document serves informational purposes only. National product specifications may vary.

These materials are subject to change without notice. These materials are provided by SAP AG and its affiliated companies ("SAP Group") for informational purposes only, without representation or warranty of any kind, and SAP Group shall not be liable for errors or omissions with respect to the materials. The only warranties for SAP Group products and services are those that are set forth in the express warranty statements accompanying such products and services, if any. Nothing herein should be construed as constituting an additional warranty.